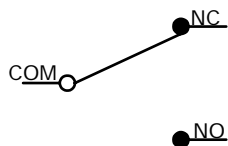


P.C. MOUNTING

O.P. (MM)	P.T. (MM)
6.8 ± 0.5	1.8 MAX.

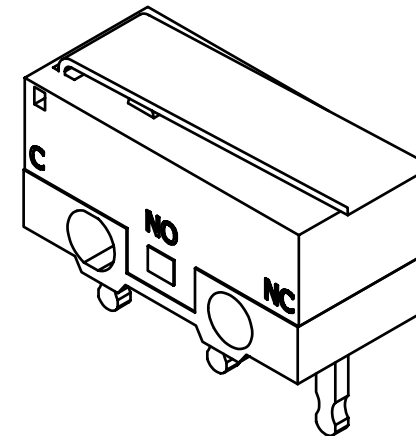
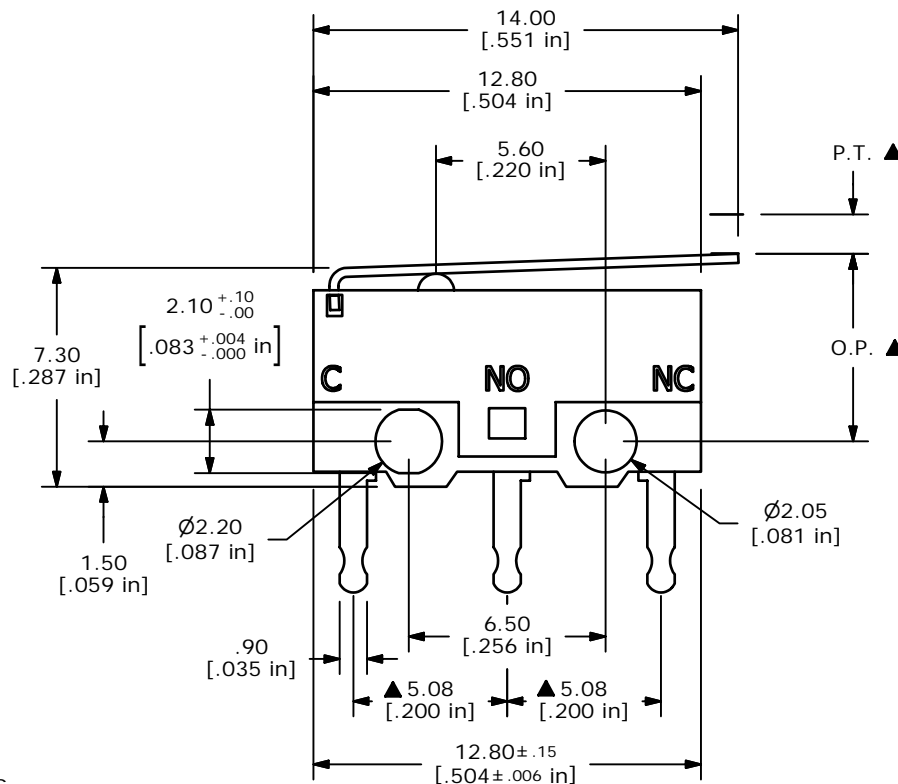
O.P. = OPERATING POINT  
P.T. = PER-TRAVEL



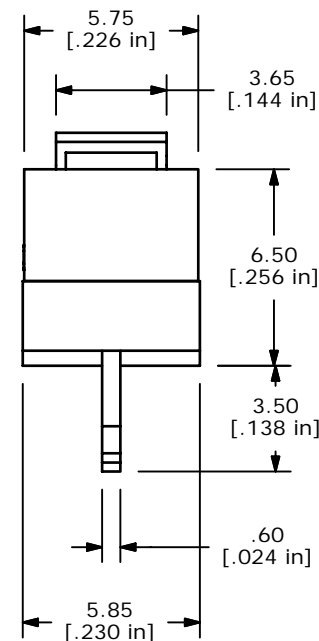
CIRCUIT: SPDT

NOTES:

- ALL DIMENSIONS IN MM [INCH]
- GENERAL TOLERANCE: X.X=±0.4  
X.XX=±0.25
- RATING: 0.1A @5V DC
- OPERATING FORCE: 45gf
- OPERATING TEMP: -25°C TO 85°C
- ELECTRICAL LIFE: 10,000 CYCLES MIN.
- INSULATION RESISTANCE: 100 MEGA-OHMS
- DIELECTRIC STRENGTH: 1000V RMS AT SEA LEVEL
- ▲ DENOTES CRITICAL PARAMETER.
- 2002/95/EC (ROHS) COMPLIANT
- CONTACT MATERIAL: SILVER



ISOMETRIC



C	17496	REVISED AND REDRAWN	7/23/07	BF
REV	PCR NO	DESCRIPTION	DATE	BY

THE INFORMATION CONTAINED IN THIS DOCUMENT IS PROPRIETARY TO E-SWITCH AND IS NOT TO BE COPIED OR TRANSFERRED

TITLE DM085Q101F045P1A				
SCALE	DATE	DR	DWG	REV
4:1	7/23/2007	BF	P030011	C